

CLIENT
EON Element

PROJECT
Grarasje
6200x7400mm 3'

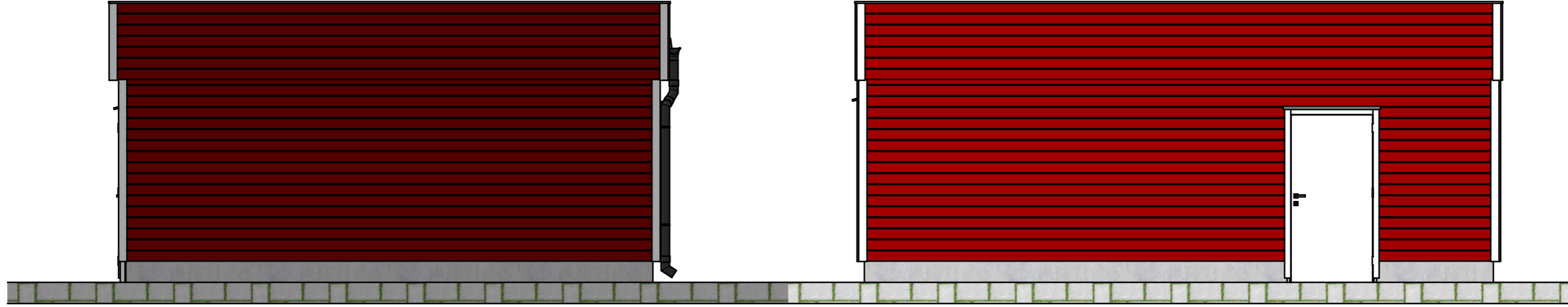
PROJECT NO.

ISSUE
2022-12-09

DRAWN BY
T. Sch.

DESCRIPTION
3D





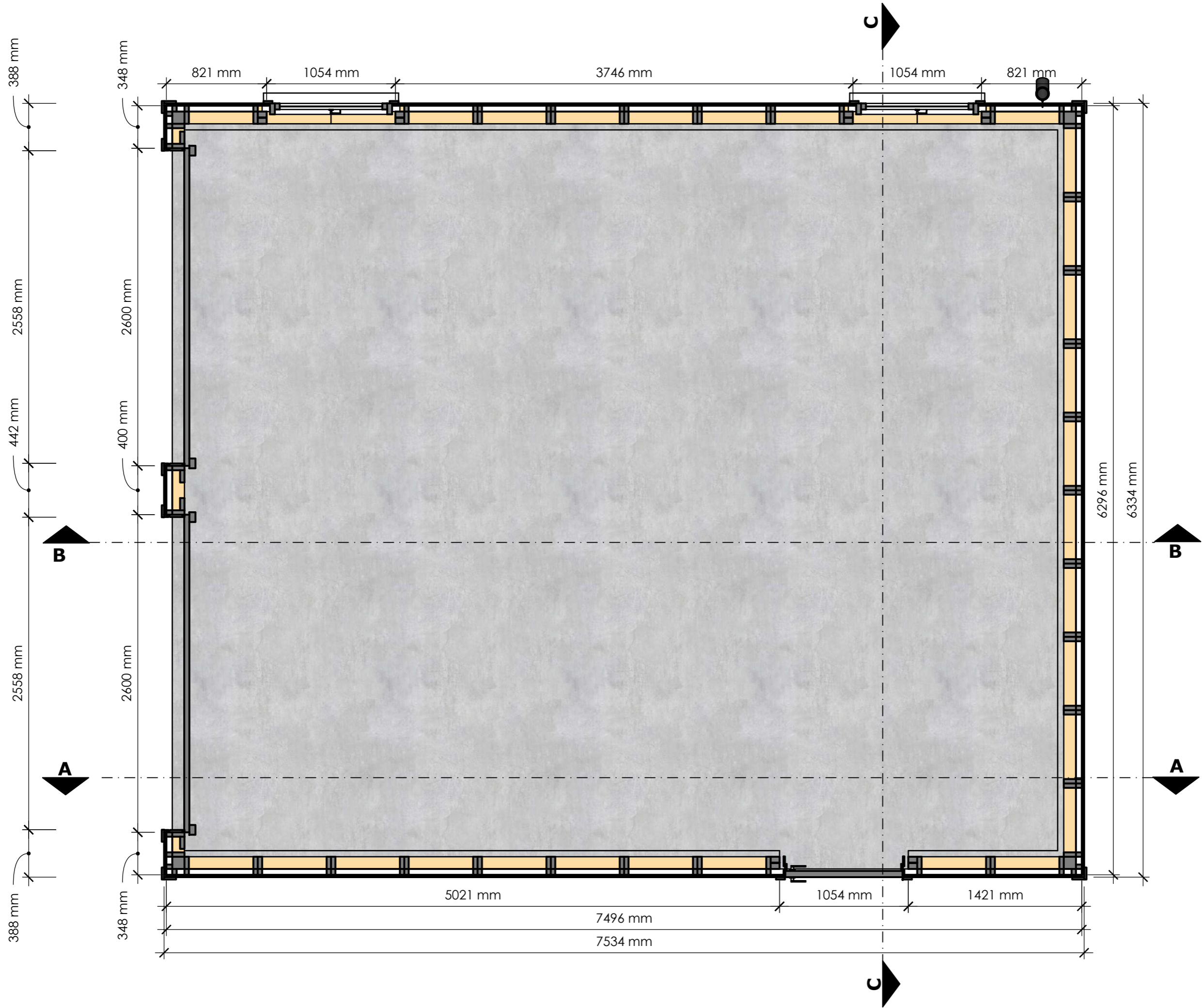
DRAWN BY
T. Sch.
DESCRIPTION
Fasade

PROJECT NO.
PROJECT
Grarasje
6200x7400mm 3'

ISSUE
2022-12-09
RE-ISSUE

CLIENT
EON Element





CLIENT
EON Element

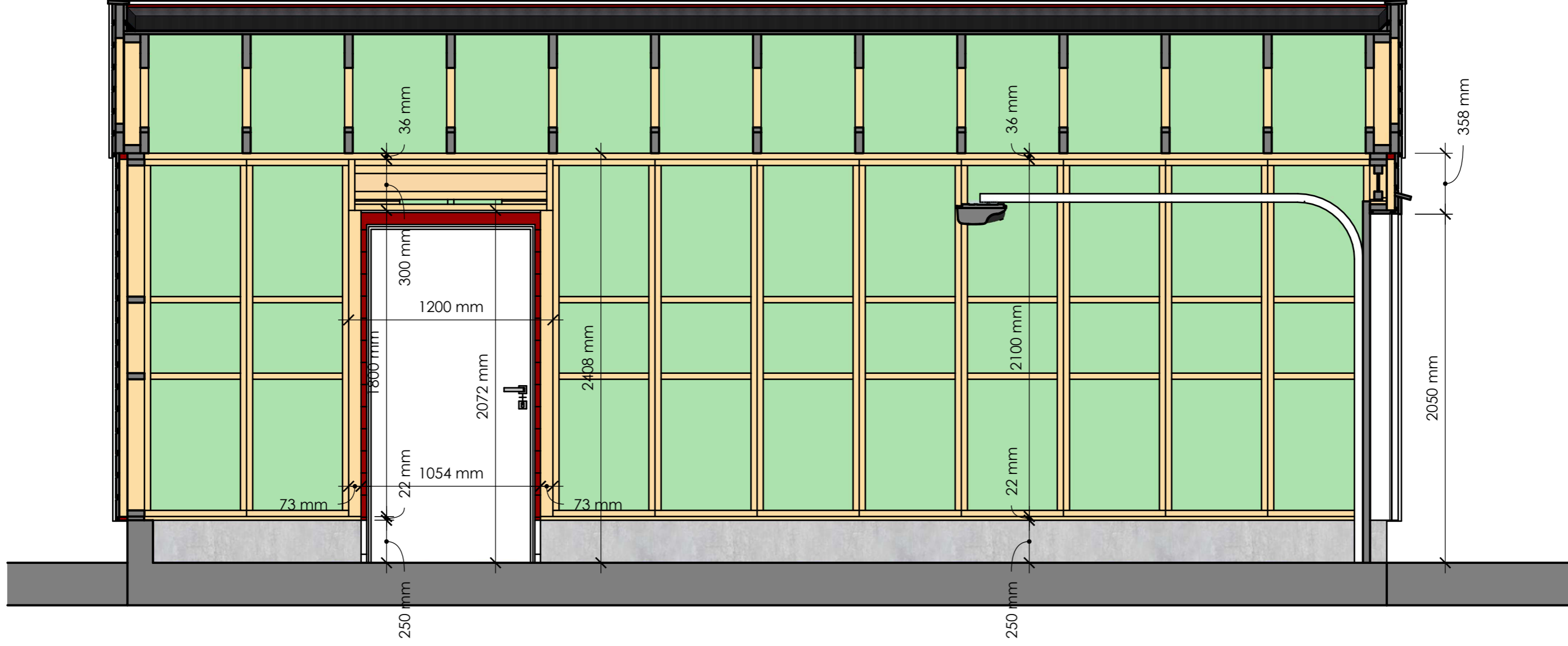
ISSUE
2022-12-09
RE-ISSUE

PROJECT NO.
PROJECT
Grasje
6200x7400mm 3'

DRAWN BY
T. Sch.
DESCRIPTION
Plantegning

a

1

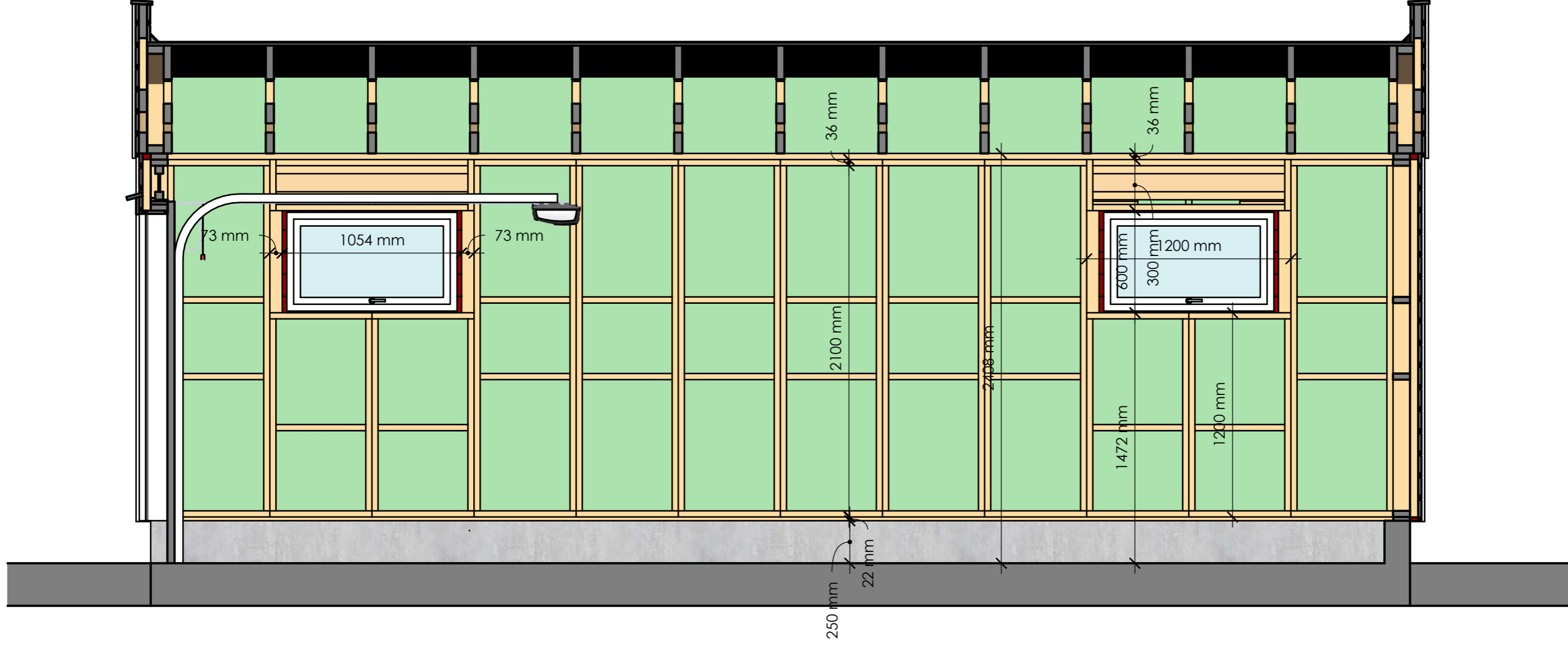


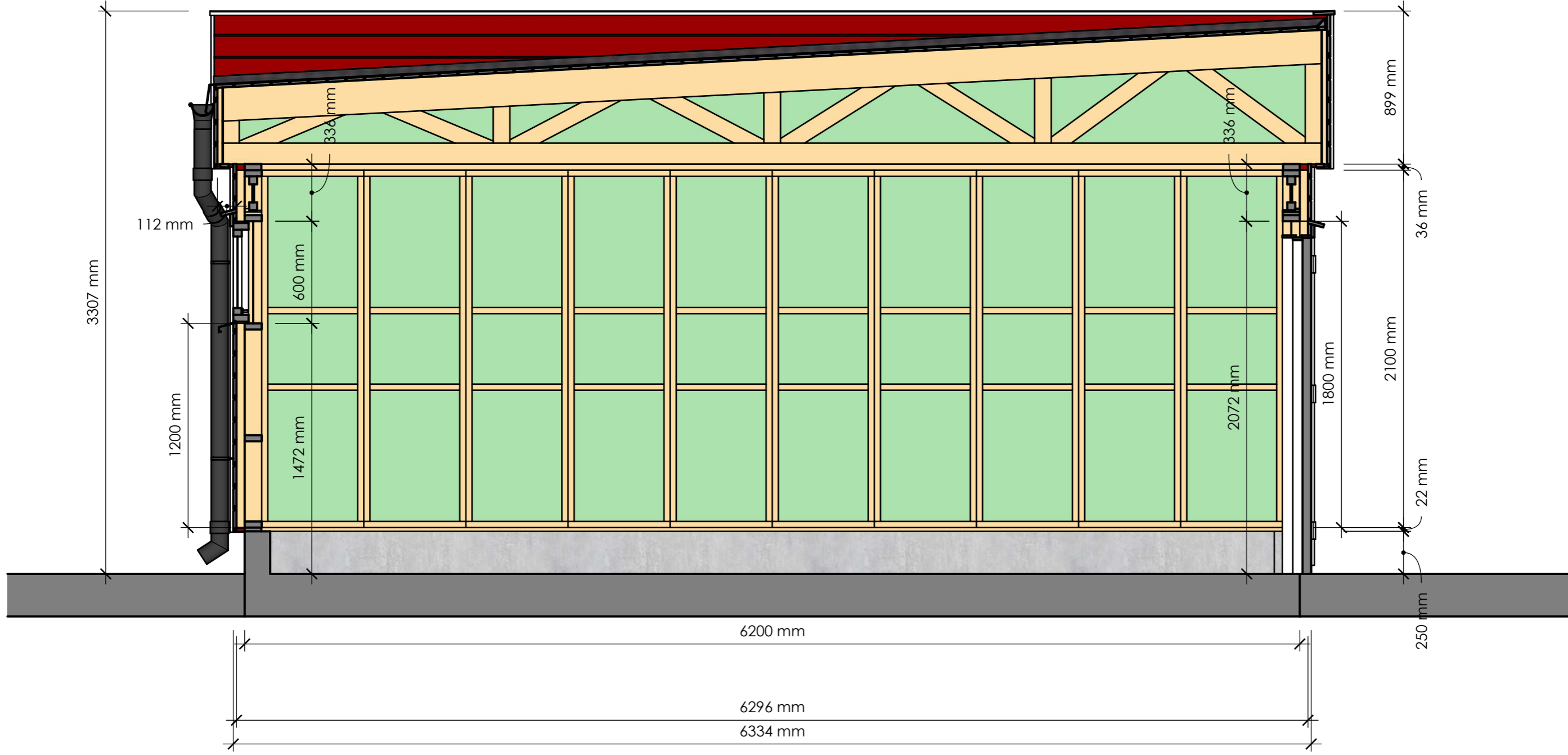
DRAWN BY
T. Sch.
DESCRIPTION
Snitt A - A

PROJECT NO.
PROJECT
Grarasje
6200x7400mm 3'

ISSUE
2022-12-09
RE-ISSUE

CLIENT
EON Element





CLIENT
EON Element

ISSUE
2022-12-09
RE-ISSUE

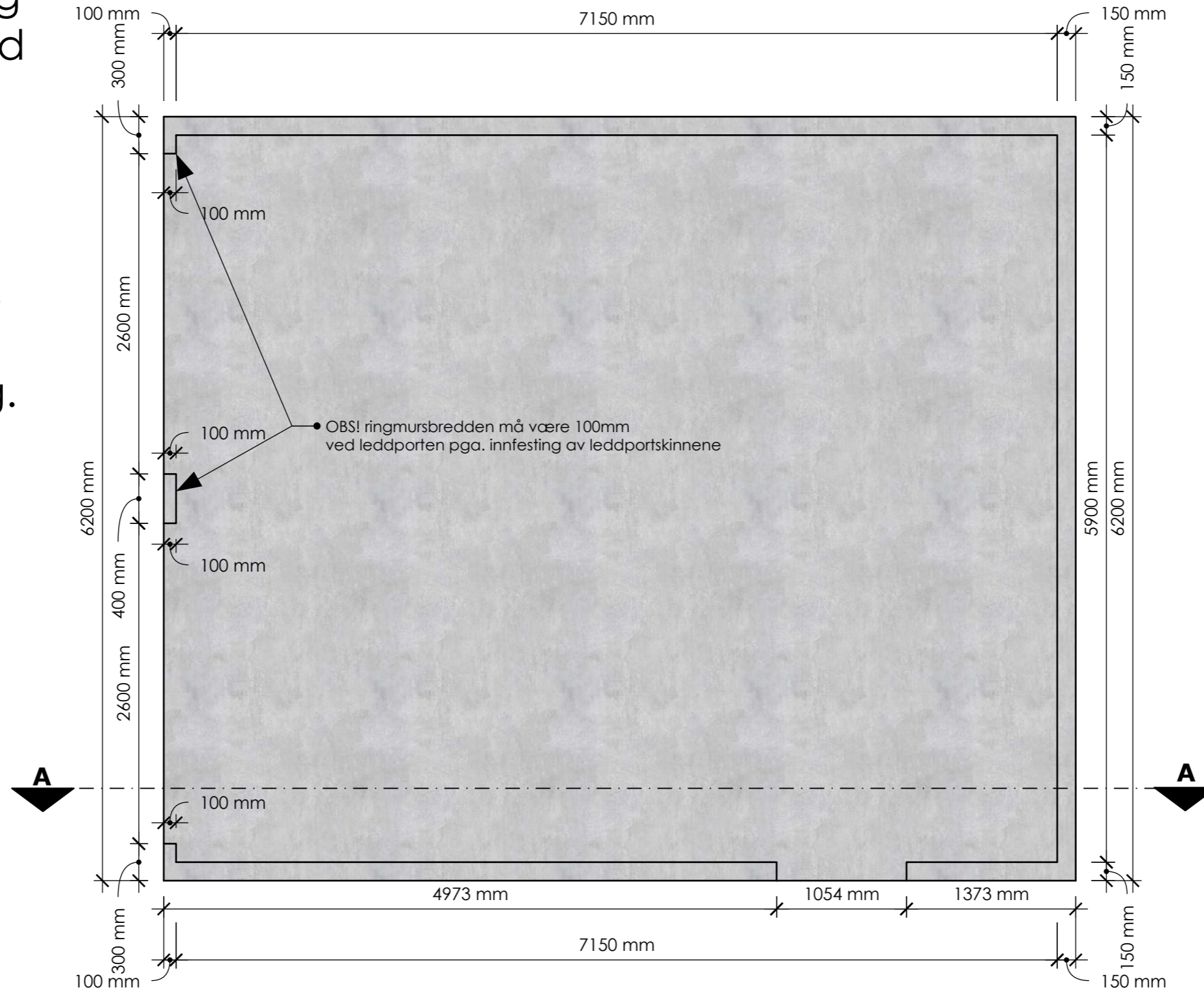
PROJECT NO.
PROJECT
Grarasje
6200x7400mm 3'

DRAWN BY
T. Sch.
DESCRIPTION
Snitt C - C

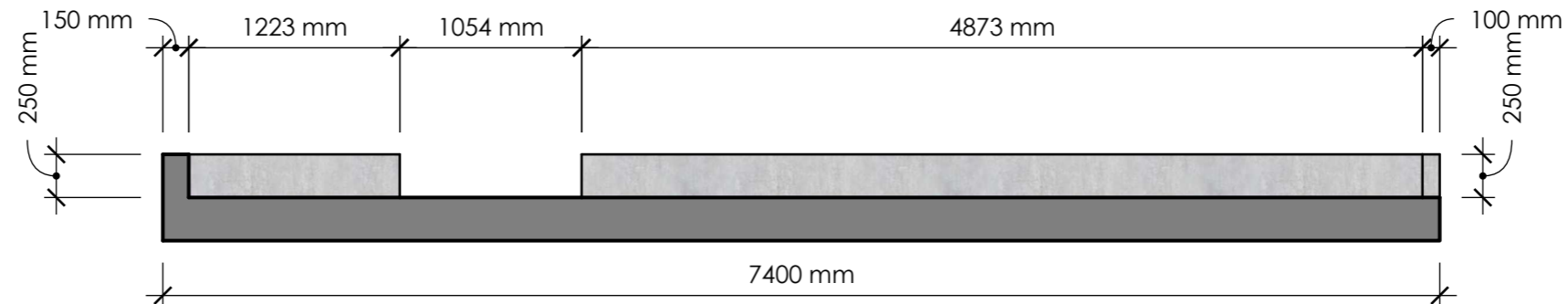


Eksempel tegning til en garasje med to leddporter i fronten.

Utsparingen til døra forskyves med 600mm hvis det velges en annen plassering.



Snitt A - A



CLIENT
EON Element

ISSUE
2022-12-09
RE-ISSUE

PROJECT NO.
PROJECT
Grarasje
6200x7400mm 3'

DRAWN BY
T. Sch.
DESCRIPTION
Grunnmur

