

CLIENT
EON Element

PROJECT
Grarasje
6200x7400mm

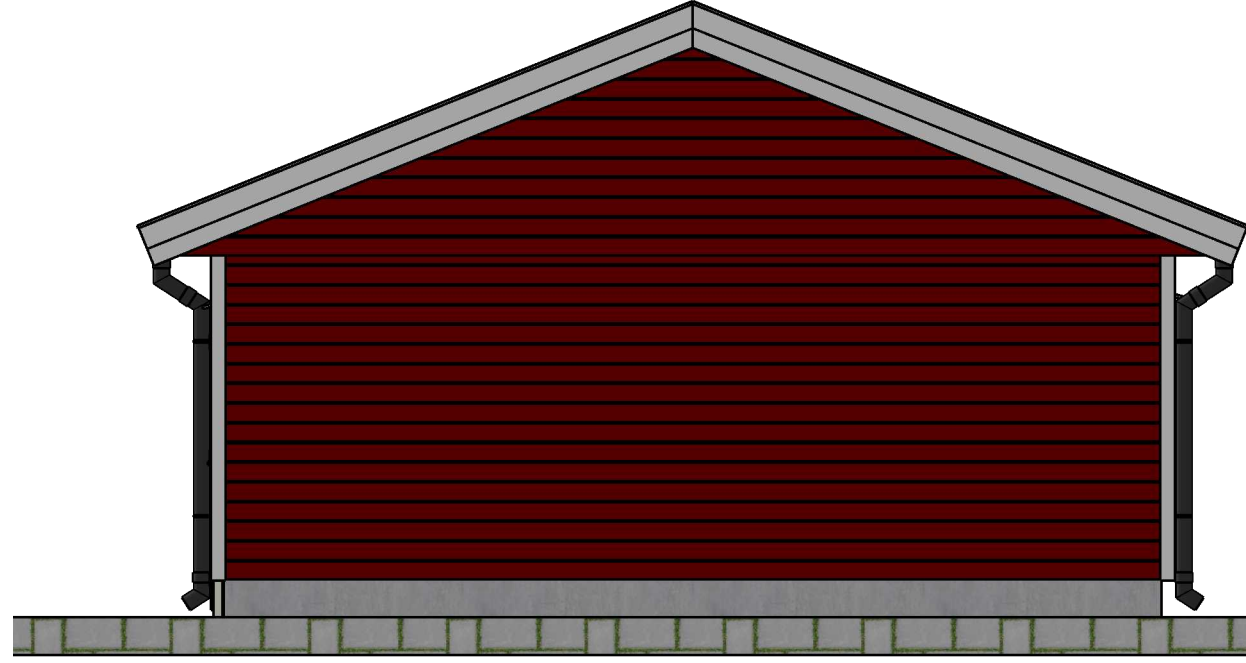
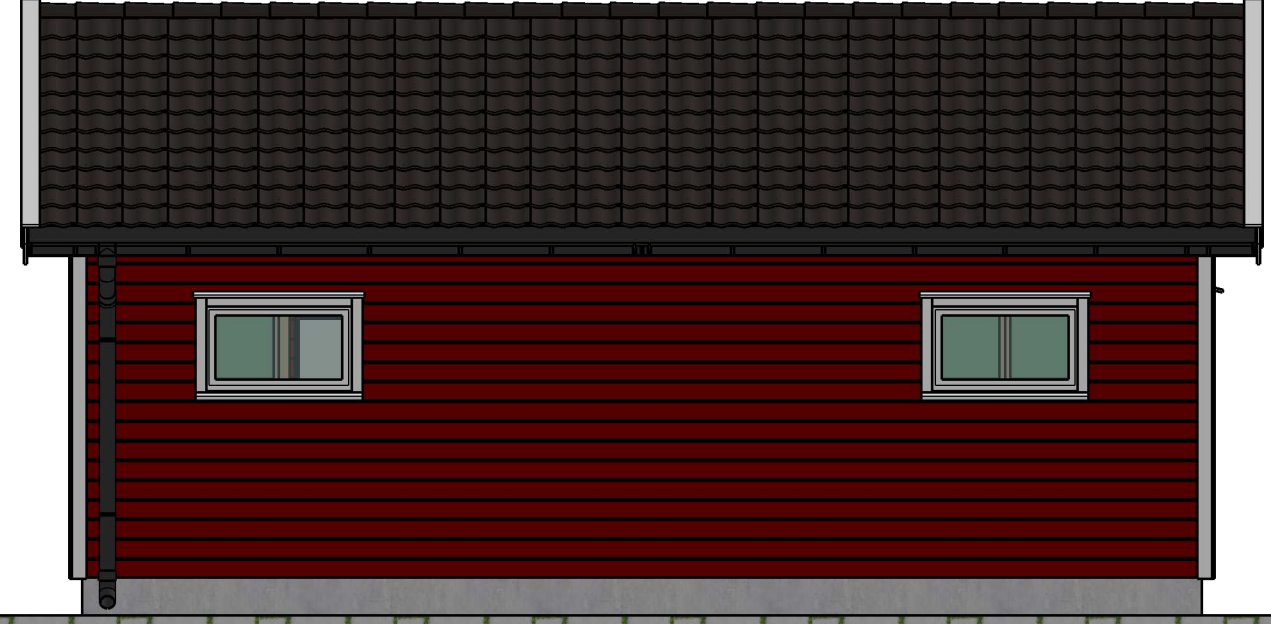
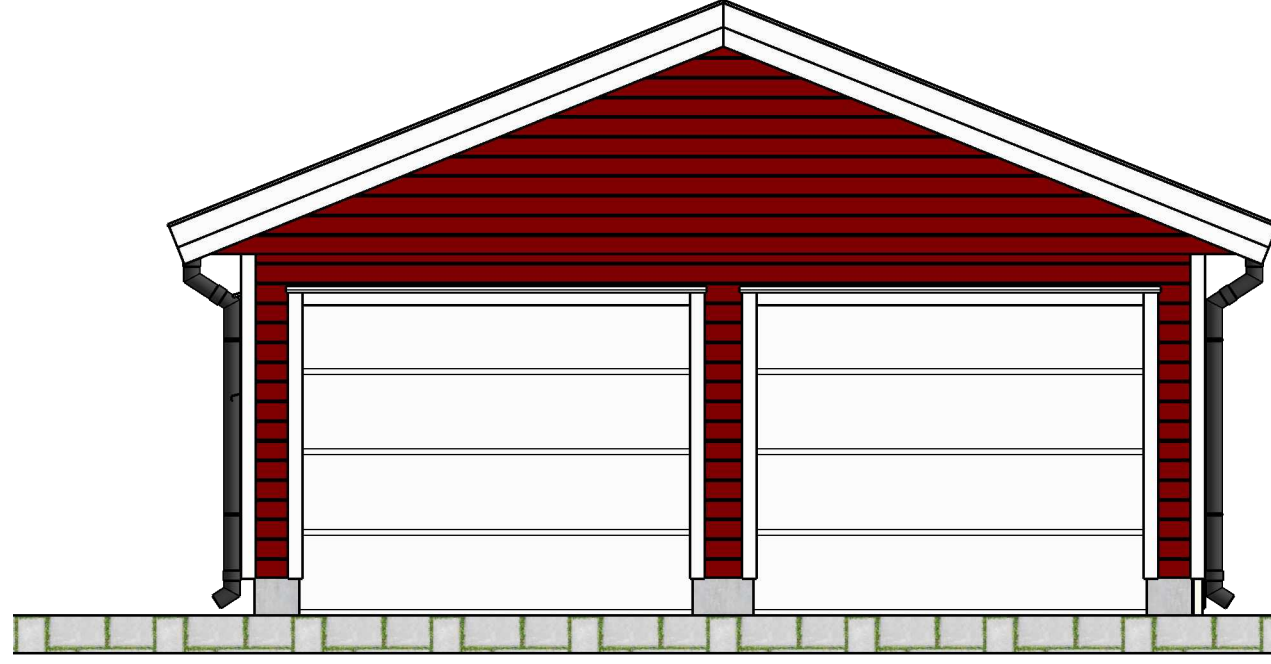
PROJECT NO.

ISSUE
2022-11-10

DRAWN BY
T. Sch.

DESCRIPTION
3D



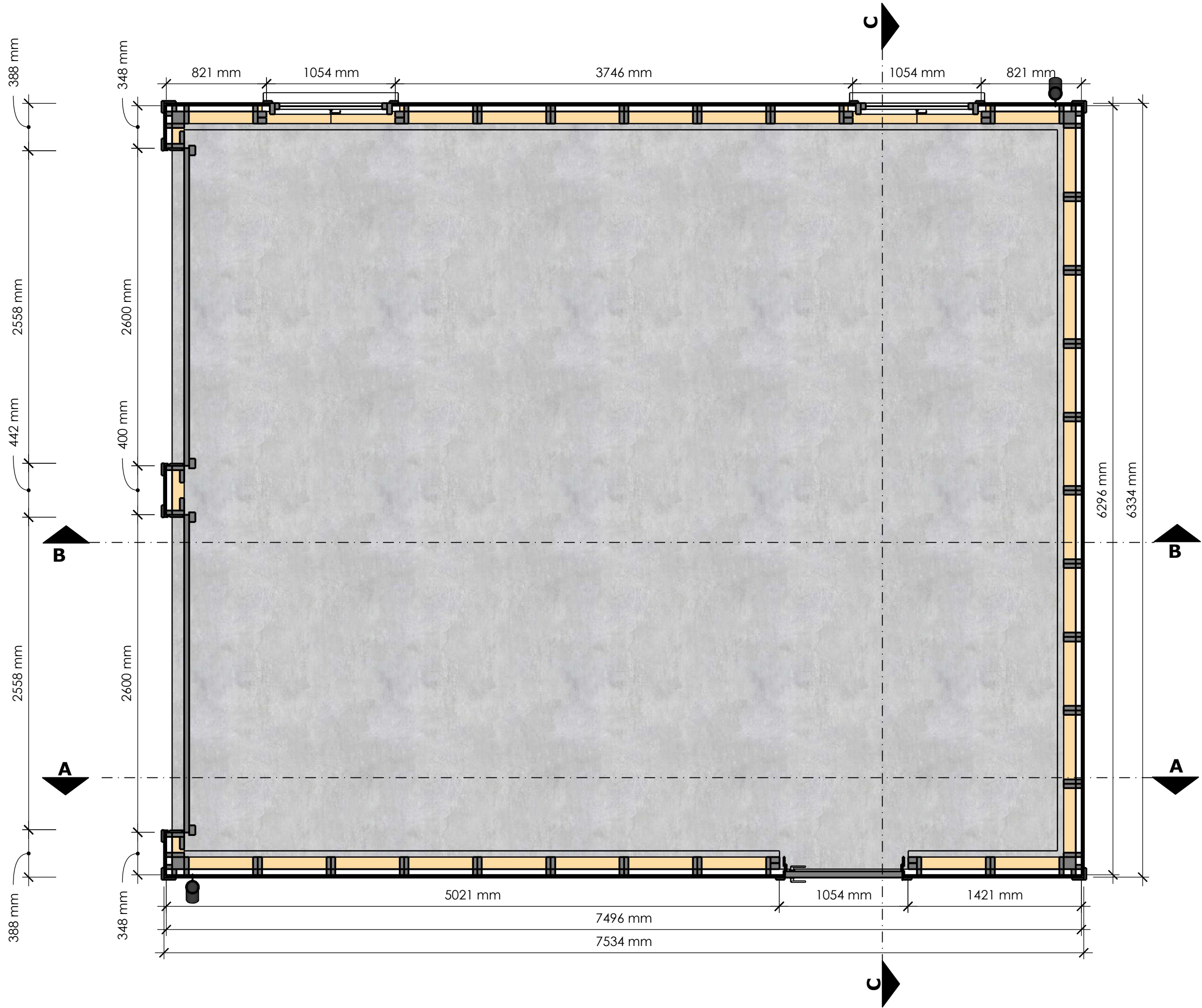


CLIENT
EON Element

ISSUE
2022-11-10
RE-ISSUE

PROJECT NO.
PROJECT
Grarasje
6200x7400mm

DRAWN BY
T. Sch.
DESCRIPTION
Fasade



CLIENT
EON Element

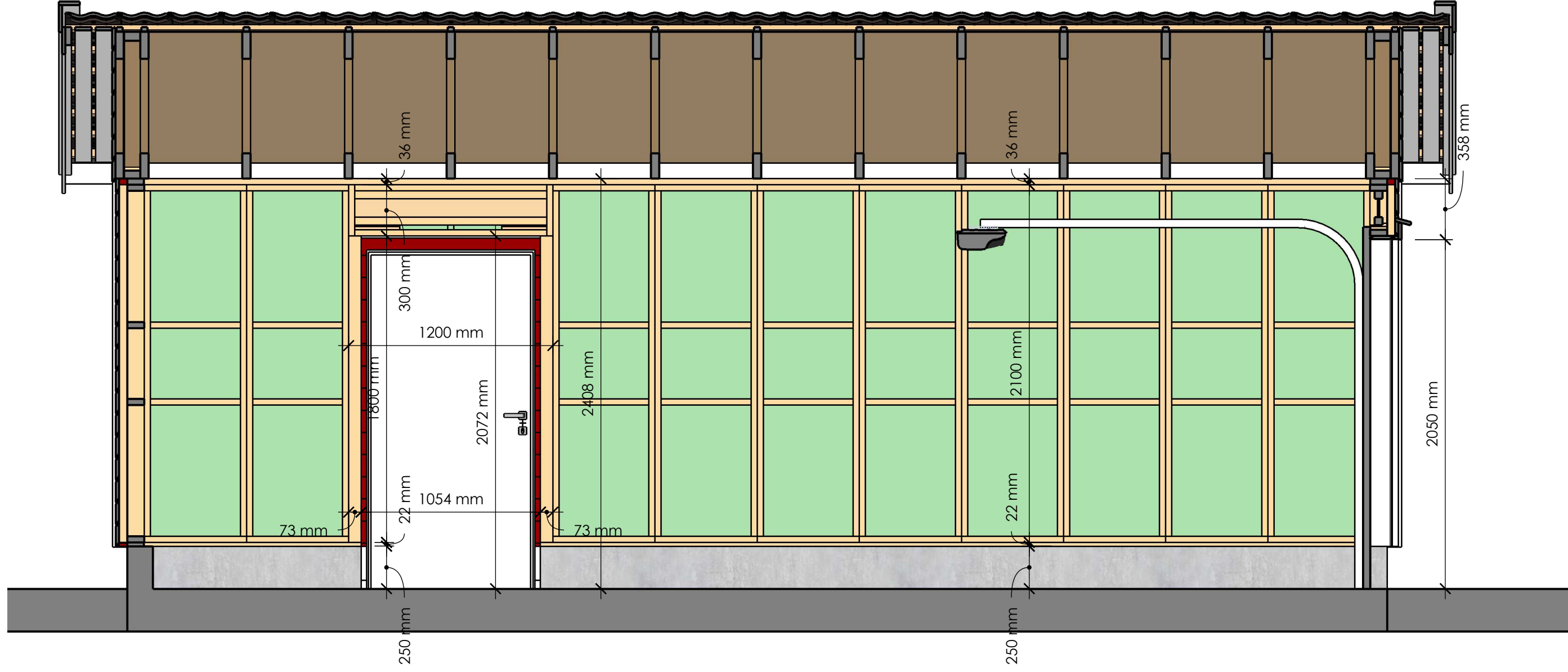
ISSUE
2022-11-10
RE-ISSUE

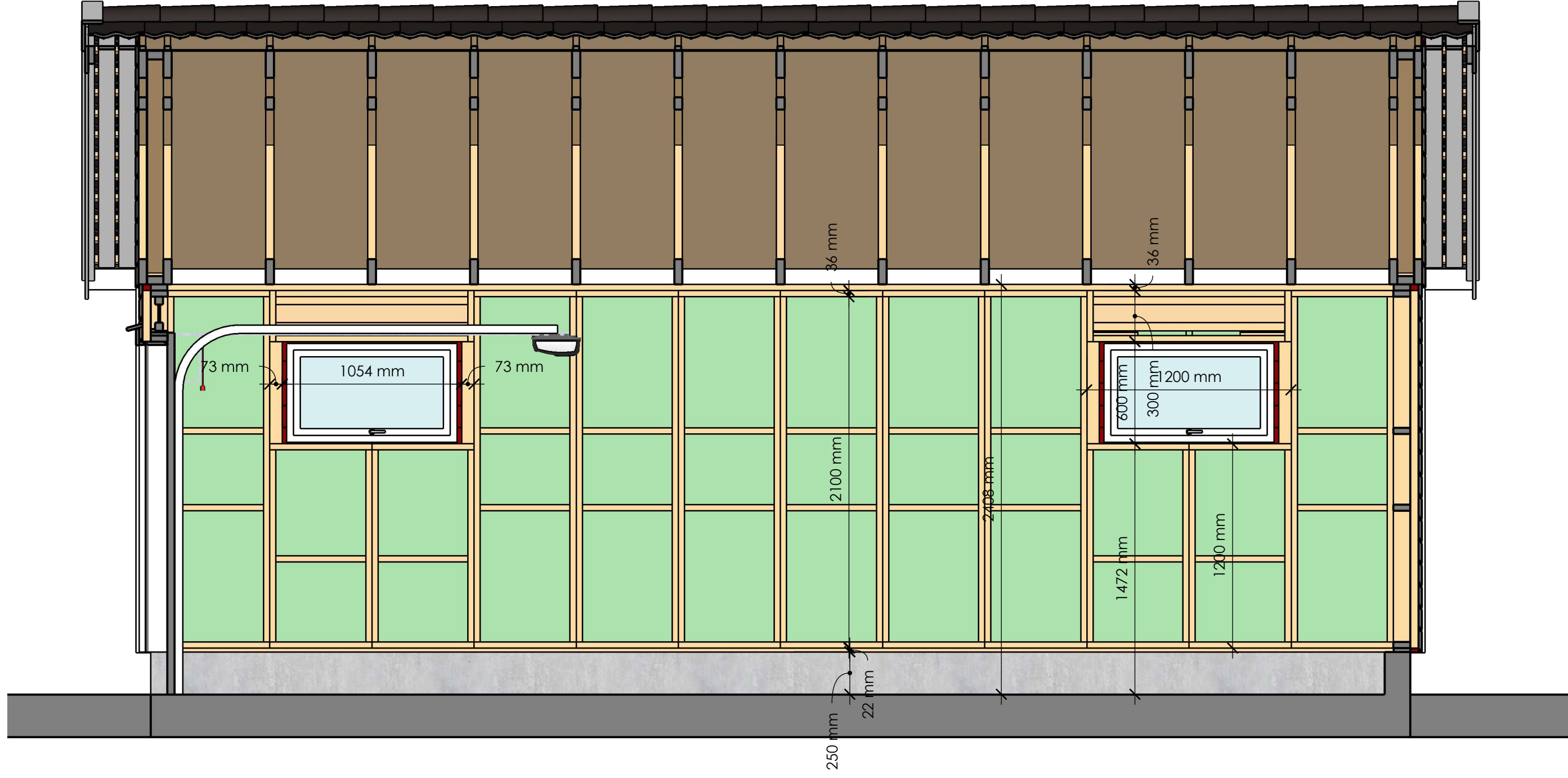
PROJECT NO.
PROJECT
Grasje
6200x7400mm

DRAWN BY
T. Sch.
DESCRIPTION
Plantegning

a

1



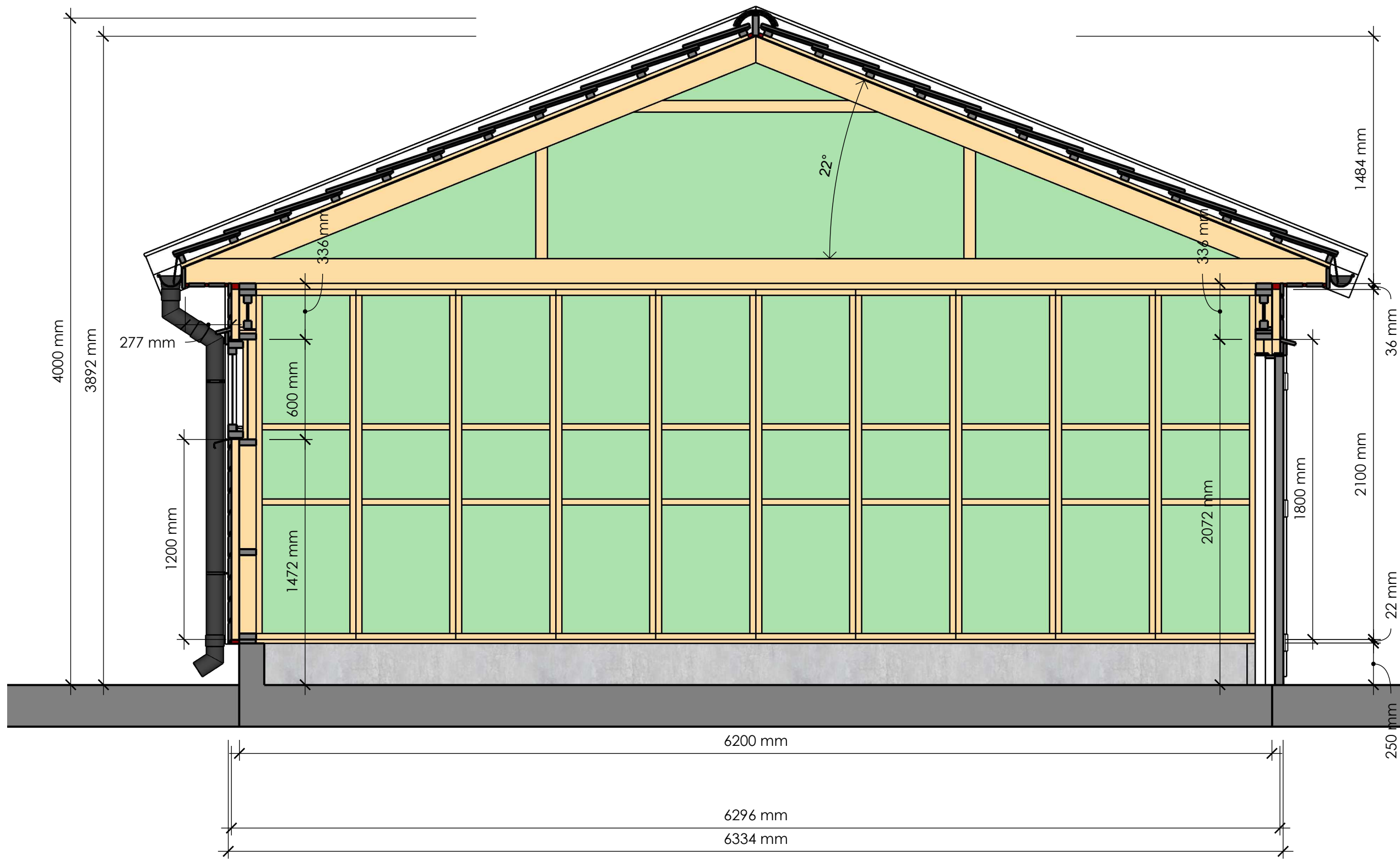




DRAWN BY T. Sch.	PROJECT NO. Grarasje 6200x7400mm	CLIENT EON Element
DESCRIPTION Snitt B - B	ISSUE 2022-11-10 RE-ISSUE	

3

a



CLIENT
EON Element

ISSUE
2022-11-10
RE-ISSUE

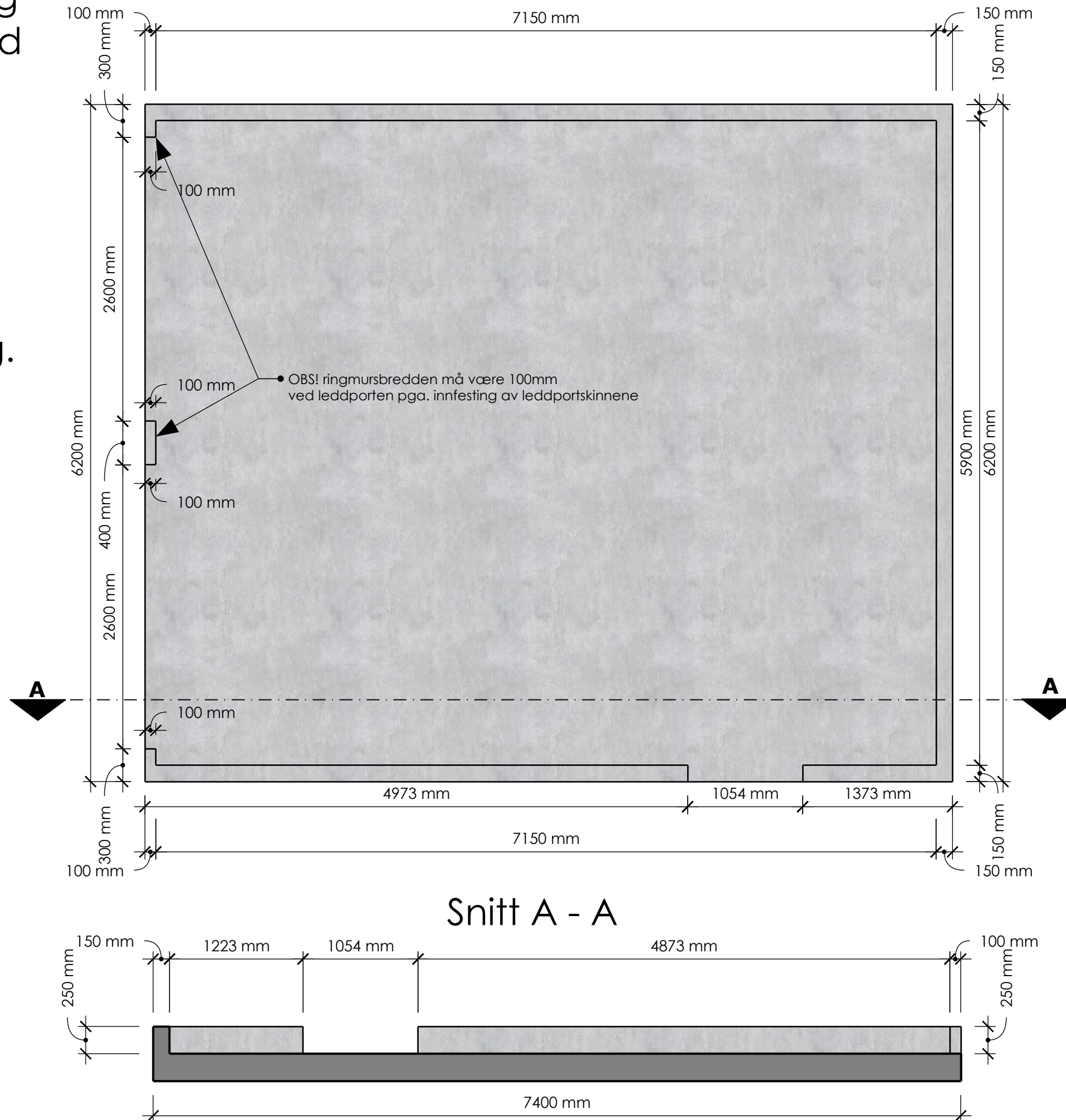
PROJECT NO.
PROJECT
Grasje
6200x7400mm

DRAWN BY
T. Sch.
DESCRIPTION
Snitt C - C



Eksempel tegning til en garasje med to leddporter i fronten.

Utsparingen til døra forskyves med 600mm hvis det velges en annen plassering.



CLIENT
EON Element

ISSUE
2022-11-10
RE-ISSUE

PROJECT NO.
PROJECT
Grarasje
6200x7400mm

DRAWN BY
T. Sch.
DESCRIPTION
Grunnmur

